

# HAND DRIP COFFEE

|   | 50%           | ( )   |            |
|---|---------------|-------|------------|
| <b>SINGLE-ORIGIN</b>                        | 1 1           | 가     | ( )        |
| 1. Jamaica Blue Mountain                    | 가             |       | 20,        |
| 2. Hawaiian Old Kona                        |               |       | 18,        |
|   |               |       | , 100%     |
| 3. Yemen Mocha Matarri                      | 2,000         | 가     | Bani Matar |
|   |               |       | 17,        |
| 4. Kenya AA                                 | AA            |       |            |
| 38km  | Ndarugu River |       | 16,        |
| 5. Mt. Kilimanjaro                          |               |       |            |
| Shade Grown                                 |               | Moshi | Machame    |
|   |               |       | 16,        |
| 6. Organic Costa Rica                       |               |       |            |
| OCIA(Organic Crop Improvement Association)가 |               |       | 16,        |
| Tierra Madre                                | 1000m         |       |            |
| 7. Ethiopia Yirgacheffe                     |               | 가     |            |
|   | ( )           |       | 1,900      |
|   | 가             | 가     | 16,        |
| 8. Ethiopia Mocha Harar                     |               |       |            |
| 가   |               | 가     | 15,        |
| 9. Sumatra Mandheling                       |               |       |            |
|   |               |       | 15,        |

\* 가가 가  
(V.A.T. & Service charges included.)

|                       |               |   |       |              |              |     |
|-----------------------|---------------|---|-------|--------------|--------------|-----|
| 10. Guatemala Antigua |               |   |       |              |              | 15, |
|                       | 가             |   |       |              |              |     |
| 11. India Bababudan   |               |   |       |              |              | 14, |
|                       | . 아라비카 워시드 AA |   |       |              | , 아라비카 체리 AA |     |
| 12. Sulawesi Toraja   |               |   |       |              |              | 14, |
|                       |               |   |       | 2            |              |     |
| 13. Mexico Altura     |               |   |       |              |              | 14, |
|                       | 가             |   |       | Sierra Madre |              |     |
| 14. Honduras          |               |   |       |              |              | 14, |
|                       | 70~80%가       |   |       |              | 가            |     |
|                       | SHG           |   |       |              |              |     |
| 15. Columbia Supremo  |               |   |       |              |              | 14, |
| 16. Decaffeined       |               |   |       |              |              | 14, |
|                       |               |   | 0.02% |              |              |     |
| <b>BLEND COFFEE</b>   | 1             | 1 | 가     | ( )          |              |     |
| 17. Great Blend       |               |   |       |              |              | 14, |
|                       | No.7          |   |       |              |              |     |
| 18. House Blend       |               |   |       |              |              | 14, |
|                       | ,             | , | ,     |              |              |     |
| 19. Cafe Espresso     |               |   |       |              |              | 13, |

\* 가가 가  
(V.A.T. & Service charges included.)

# VARIATION COFFEE

1 1 가 ( ) .

## HOT

1. Cafe Royal

프렌치 꼬냑

가

18,



2. Irish Coffee

아이리쉬 위스키,

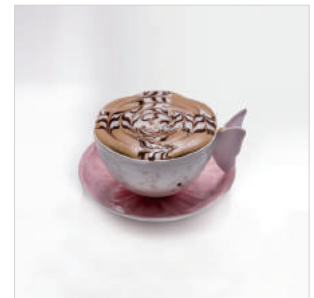
가

16,



3. Moccachino

16,



4. Cafe Wien

이 잘 가

진 커피

16,



5. Cappuccino

15,

6. Cafe Latte

15,

7. Cafe Americano

13,

\* 가가 가 .  
(V.A.T. & Service charges included.)

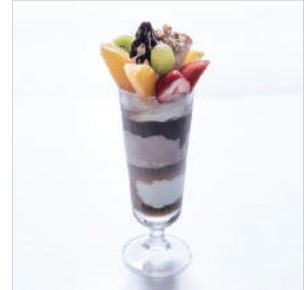
# VARIATION COFFEE

1 1 가 ( ) .

## ICED

8. Honour & Chivalry

, , 18,



9. Coffee Float Volcano

리큐어 깔루아 초코

가 16,



10. Iced Cafe Wien

17,

11. Iced Mochaccino

17,

12. Iced Cafe Latte

16,

13. Iced Coffee

( / )

14,

## OTHERS

Juice

, , , , , , , ( )

15,

Bottled beer

/ / /

12,

/

10,

\* 가가 가 .  
(V.A.T. & Service charges included.)

# TEA

---

## PREMIUM TEA

|                    |     |
|--------------------|-----|
| 1. Lemon Honey Tea | 16, |
| 2. Marco Polo      | 16, |
| 3. Dazzling        | 15, |
| 4. Earl Grey       | 15, |
| 5. Green Tea       | 15, |
| 6. Jasmine         | 15, |

## CAFFEINE-FREE TEA

|                        |     |
|------------------------|-----|
| 7. Venezian Temptation | 15, |
| 8. Sweet Mate          | 15, |
| 9. Blue Mellow         | 15, |
| 10. Wild Strawberry    | 15, |
| 11. Cammomile          | 15, |
| 12. Rooibos            | 15, |
| 13. Peppermint         | 15, |
| 14. Lavender           | 15, |

# DESSERT

가 ,

## BRIOCHE 브리오슈

17

Moulins de Paris

가

,

가

Grands

1. Blueberry Brioche

9,



2. Dark Choco Brioche

9,



3. Honey Nuts Brioche

9,



4. Strawberry Brioche (Seasonal)

( )

9,



\* 가가 가  
(V.A.T. & Service charges included.)

# DESSERT

---

WAFFLE 4 가 합니다.

1. Waffle & Salad

4

25,



2. Strawberry & Gelato

4

25,



3. Orange with Blueberry & Gelato

,

4

25,



## ICE CREAM

Ice Cream

가

15,



\* 가가 가  
(V.A.T. & Service charges included.)